

RETAIL

shop



## The Shops at CityGate Centre

The Gateway to a Distinctive Destination



CityGate Centre™ is a vibrant mixed-use development that combines the best of city life with the benefits of a desirable suburban location. Through superior design and amenities, CityGate Centre provides a unique opportunity for businesses to enhance productivity and strengthen client relationships.

Located in prestigious Naperville, Illinois, CityGate Centre includes approximately 1,000,000 square feet of Class A office space, 150,000 square feet of high-end retail, restaurants and shops, the luxurious 144-room Hotel Arista™ and a performing arts center which will feature live theater—all in an attractively landscaped and walkable town center environment.

### CityGate Centre key points:

- Located at the highly visible intersection of I-88 and Route 59
- Unique and walkable town center environment
- Strong daytime and night/weekend demographics
- Performing arts center expected to bring approximately 13,000 visitors monthly

EXPERIENCE THE BEST OF CITY LIFE

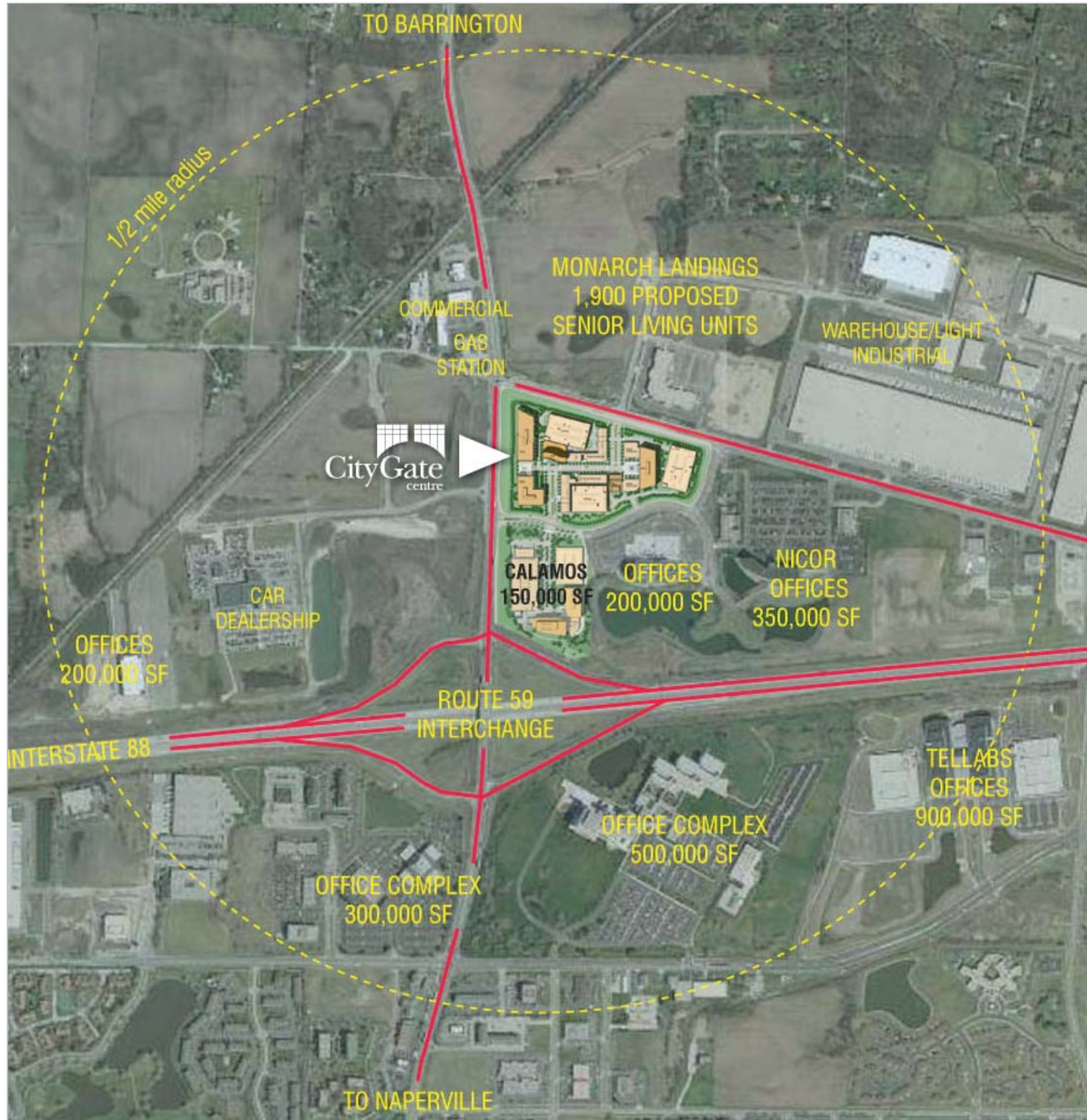


[www.citygatecentre.com](http://www.citygatecentre.com)

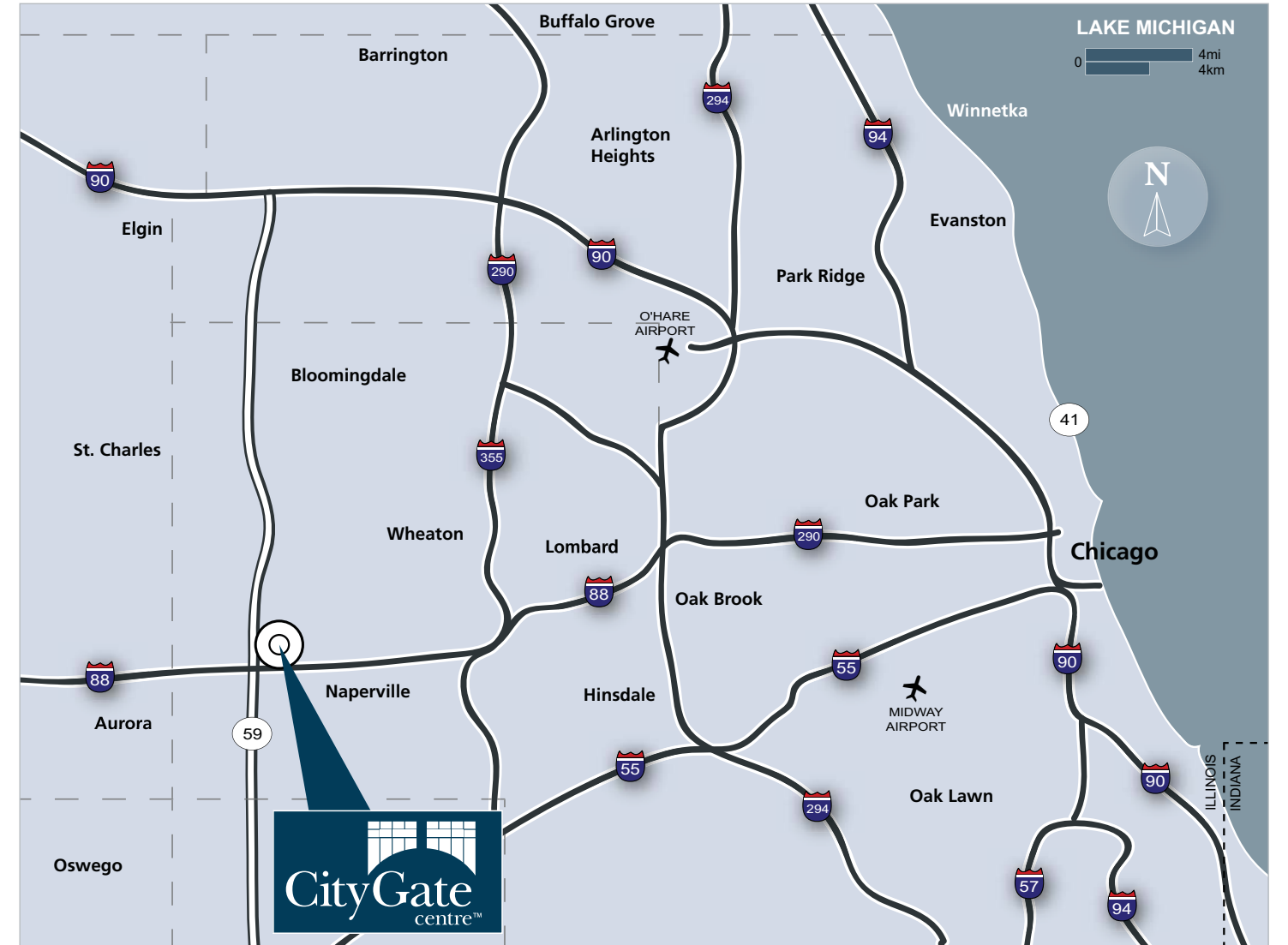
SITE PLAN



LOCATION



LOCATION



Demographics

	3 mi. radius	5 mi. radius	10 mi. radius
2005 Estimated Population	57,297	163,281	826,080
2005 Estimated Households	22,372	58,582	279,504
2005 Estimated Daytime Population	38,169	95,131	348,506
2005 Estimated Average Income	\$ 100,217	\$ 105,845	\$ 104,044

Source: 2000 Census

### Premier Location

CityGate Centre™ is a true mixed-use development that encompasses 31 acres at the highly visible intersection of I-88 and Route 59 in the rapidly growing East-West Corridor submarket of Chicago.

**Key points:**

- CityGate is advantageously positioned to benefit from its location in DuPage County, and its proximity to fast-growing Will County and Kane County.
- Recently ranked as one of the best places to live in America, Naperville is Illinois' second largest city with over 145,000 residents.
- Easily accessible from I-88 and Route 59 as well as from the surrounding road system.

